

New model

# Interactive Visualizer L-12W

With one hand  
Easily operation

Standard model of visualizer upgraded  
For PC-less and supports digital content playback



Zoom dial  
&  
One push  
Auto focus



300° Rotate

\* Rotate 300 degrees (swing) 2  
From various angles with the arm  
Can be reflected

## QUALITY ZOOM

Offer 12x optical zoom, with the 16x digital zoom in total of 192x.  
A3 horizontal full size is also supported.

Optical 12x

Digital 16x

192x



## SUPPORT SD CARD& USB MEMORY

Class content as video files and image data  
You can record to SD card or USB memory.



+a

With functions newly installed from L-12W  
More interactive lessons

■ Easily display from a distance with  
Miracast function



Can be displayed on the display wirelessly.  
\* A Miracast compatible display or receiver is required.

■ QR code reading jump function



For textbooks and reference books  
Read the described QR code and play the digital content.

■ Office files without PC  
Play digital content

Android OS Office files can be displayed.  
\* Separate application required.

## Useful functions

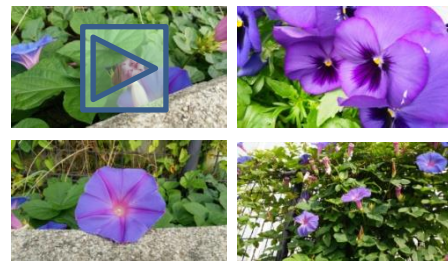
### Timer function

It is convenient timer function that can called immediately.



### Comparison function

Images can be split and displayed on up to 4 screens. One screen is camera Live video can import.



## Accessories

Andriod

Easy electronic blackboard



Connect a unit type electronic blackboard **CRB-2** with LCD TVs now Projector Touch panel as it is

You can also use a mouse.



## [L-12W Main Specification]

Power supply	DC5V (AC adapter AC100- 240V/ 20W)
Imaging element	1 / 3.2-inch CMOS 8 million pixels
Effective pixel count	3,264x 1,836 (16:9), 2,992x 2,244 (4:3)
Imaging speed	30fps
Shooting lens	F= 3.46-41.5 12X Zoom lens F=3.2-3.6
Zoom	Optical 12X Digital 16X
Imaging area	4:3: Max 430mm x 320mm, Min 50.7mmx 38.0mm 16:9 Max 470mmx 260mm, Min 55.2mmx 31.0mm
Focus adjustable range & Possible range	50mm to ∞ (wide), 200mm to ∞ (tele)
Focus	Automatic (one push)
Resolution	HDMI and RGB: 1080p, 720p, UXGA, XGA USB: 1920x1080, 1280x720, 1600x1200, 800x600, 640x480 Miracast: 720p
Image rotation	0° / 90° / 180° / 270°
Lighting lamp	White LED
Spilt screen display	2 screen/ 4 screen (camera image, still image on memory)
Input selection	Body/ External (RGBx1, HDMIx1)
USB camera function	Available (USB Video Class compatible)
Output Terminal	RGB output Mini D sub 15P connector female x1 HDMI output terminal x1 Line output terminal Φ3.5mm stereo mini jack x1
Input Terminal	RGB input Mini D sub 15P connector female x1 HDMI input terminal x1 Microphone input terminal Φ3.5mm stereo mini jack x1
Interface	USB2.0 host type B receptacle x1 USB2.0 host type A receptacle x2 SD card slot x1, LAN x1 10BASE-T, 100BASE -T Wi-Fi x1 IEEE 802.11 a/b/g/n 2.4GHz/ 5GHz
External dimensions	Width: 349mm Depth: 377mm Height: 432mm (set-up) Width: 195mm Depth: 294mm Height: 475mm (fold)
Weight	Approximately 3.0 kg. (main unit only)
Accessories	AC adapter, 5V3A, power plug, quick start guide, infrared card remote control, button battery (for remote control), Cool Guarantee (label registration form and manual), operation support sticker, warranty card, HDMI cable fixture, Bull tie
Focus adjustable range& Possible range	50mm to ∞ (wide), 200mm to ∞ (tele)